

Evacuation Map








CS Library - Upper Ground

- Readers Section/Circulation Stacks
- Individual Study Area
- SLIS Library, Discussion Room 1&2
- Information Desk & Data Commons
- Exit Stairway form Second Floor to Upper Ground
- Exit Stairway form Lower Ground to Upper Ground

Evacuation Map

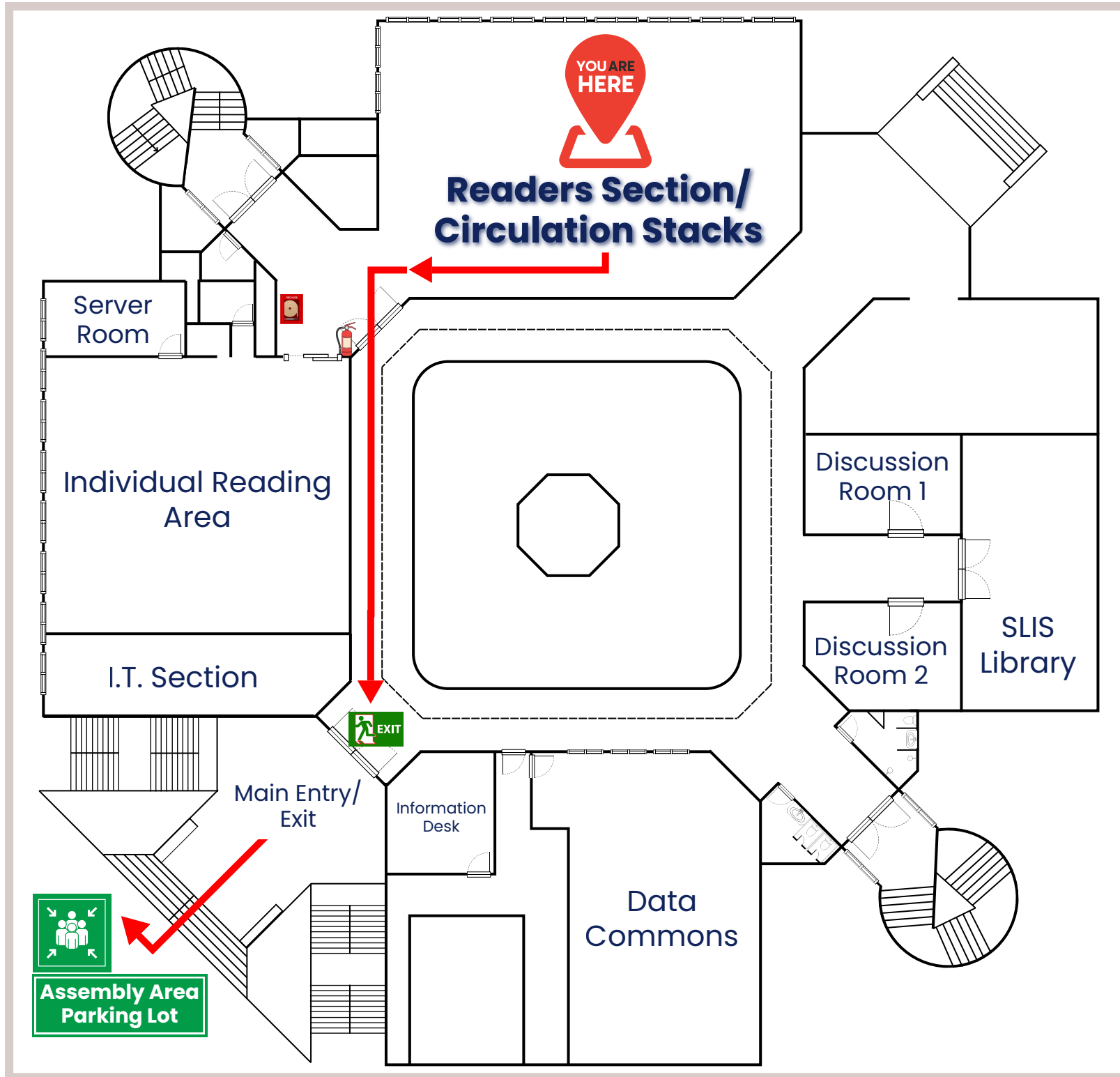
CS Library - Upper Ground
Readers Section/Circulation Stacks

Legend

-  Primary Exit Route
-  Exit Stairway
-  Exit Location
-  Assembly Area
-
-  Emergency Fire Hose
-  Fire Extinguisher
-
-  First Aid

In case of emergency please follow the instructions below:







- 1** Remain Calm and do not panic.
- 2** Evacuate people from a safe escape route. Please follow the red line.
- 3** Do not jeopardize personal safety.
- 4** Proceed to the designated assembly area.
- 5** Do not enter the building again without permission from the management



Evacuation Map

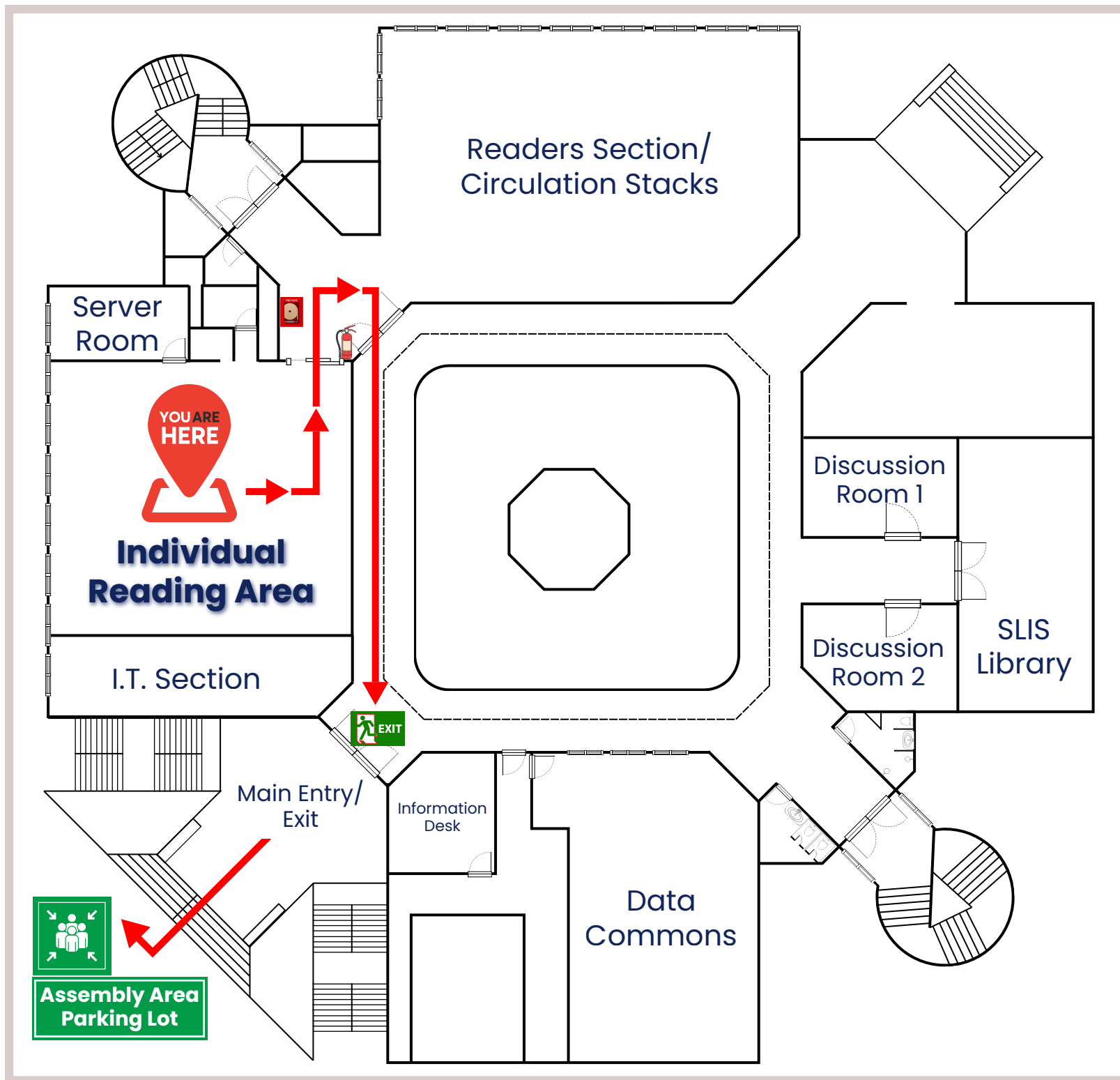
CS Library - Upper Ground
Individual Reading Carrels

Legend

-  Primary Exit Route
-  Exit Stairway
-  Exit Location
-  Assembly Area
-  Emergency Fire Hose
-  Fire Extinguisher
-  First Aid

In case of emergency please follow the instructions below:








- 1** Remain Calm and do not panic.
- 2** Evacuate people from a safe escape route. Please follow the red line.
- 3** Do not jeopardize personal safety.
- 4** Proceed to the designated assembly area.
- 5** Do not enter the building again without permission from the management



Evacuation Map

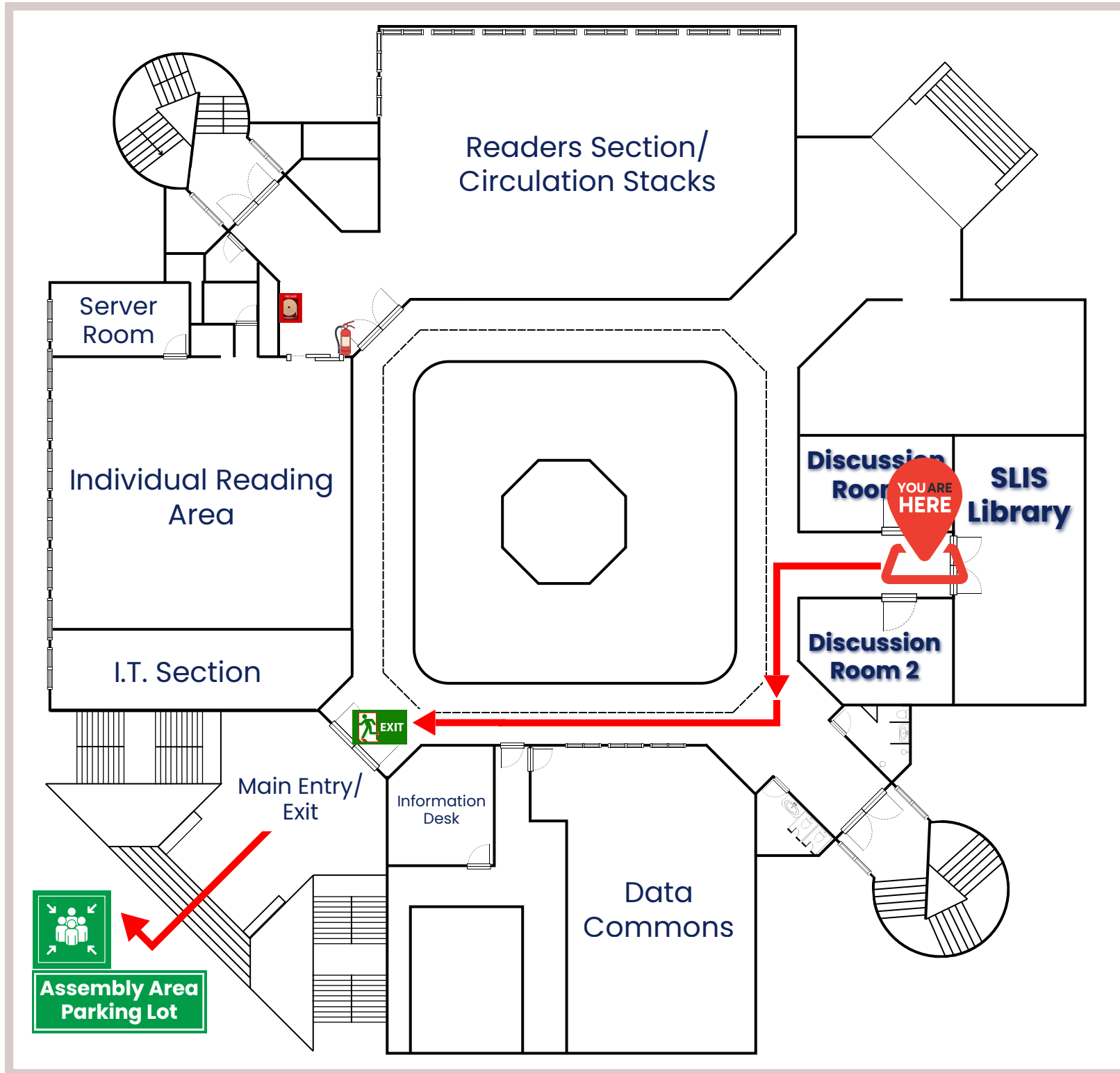
CS Library - Upper Ground
Discussion Room 1&2, SLIS Library

Legend

-  Primary Exit Route
-  Exit Stairway
-  Exit Location
-  Assembly Area
-
-  Emergency Fire Hose
-  Fire Extinguisher
-
-  First Aid

In case of emergency please follow the instructions below:








- 1** Remain Calm and do not panic.
- 2** Evacuate people from a safe escape route. Please follow the red line.
- 3** Do not jeopardize personal safety.
- 4** Proceed to the designated assembly area.
- 5** Do not enter the building again without permission from the management



Evacuation Map

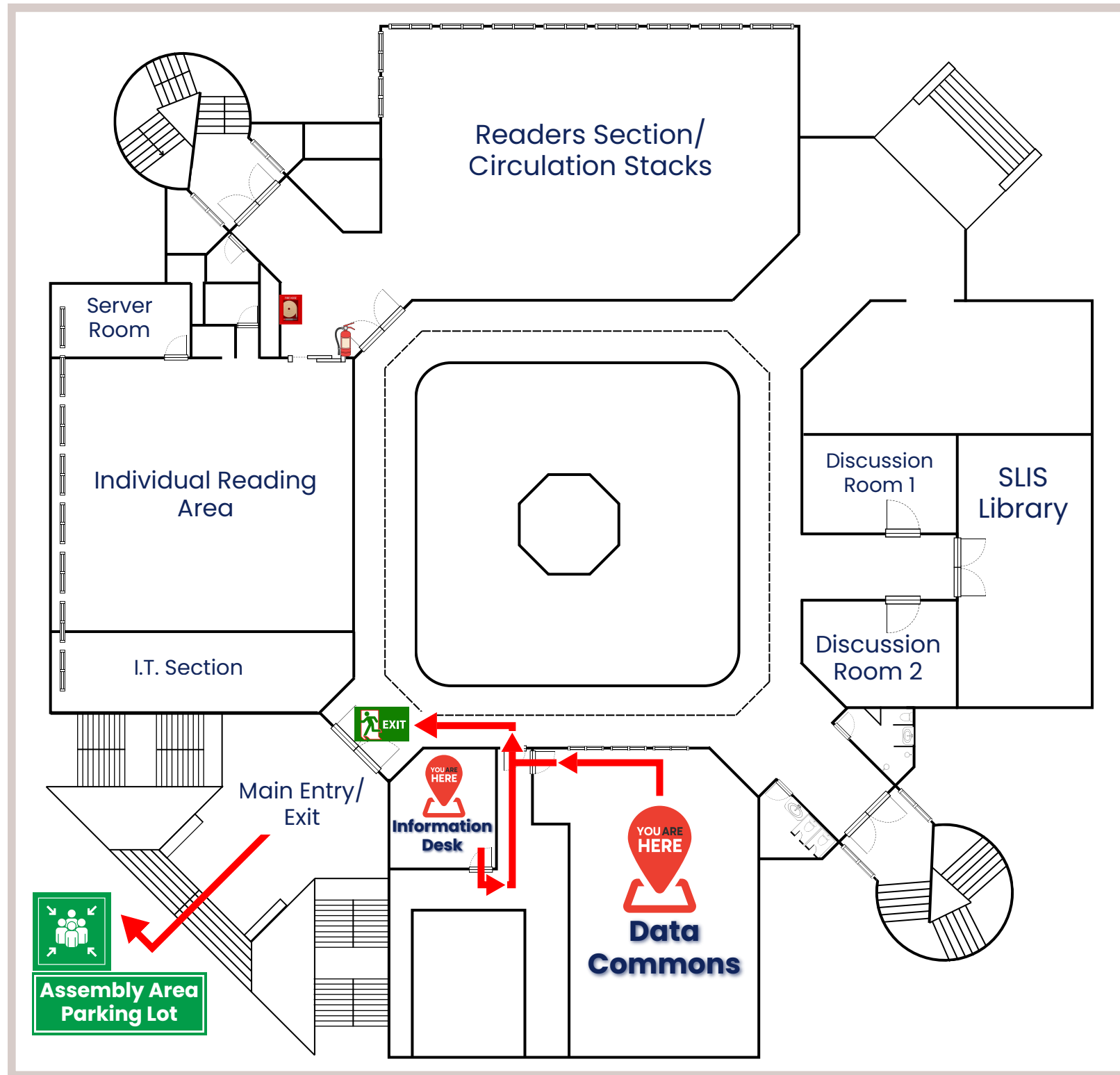
CS Library - Upper Ground
Information Desk, Data Commons

Legend

-  Primary Exit Route
-  Exit Stairway
-  Exit Location
-  Assembly Area
-
-  Emergency Fire Hose
-  Fire Extinguisher
-
-  First Aid

In case of emergency please follow the instructions below:








- 1** Remain Calm and do not panic.
- 2** Evacuate people from a safe escape route. Please follow the red line.
- 3** Do not jeopardize personal safety.
- 4** Proceed to the designated assembly area.
- 5** Do not enter the building again without permission from the management



Evacuation Map

CS Library - Upper Ground
Exit Stairway form Second Floor

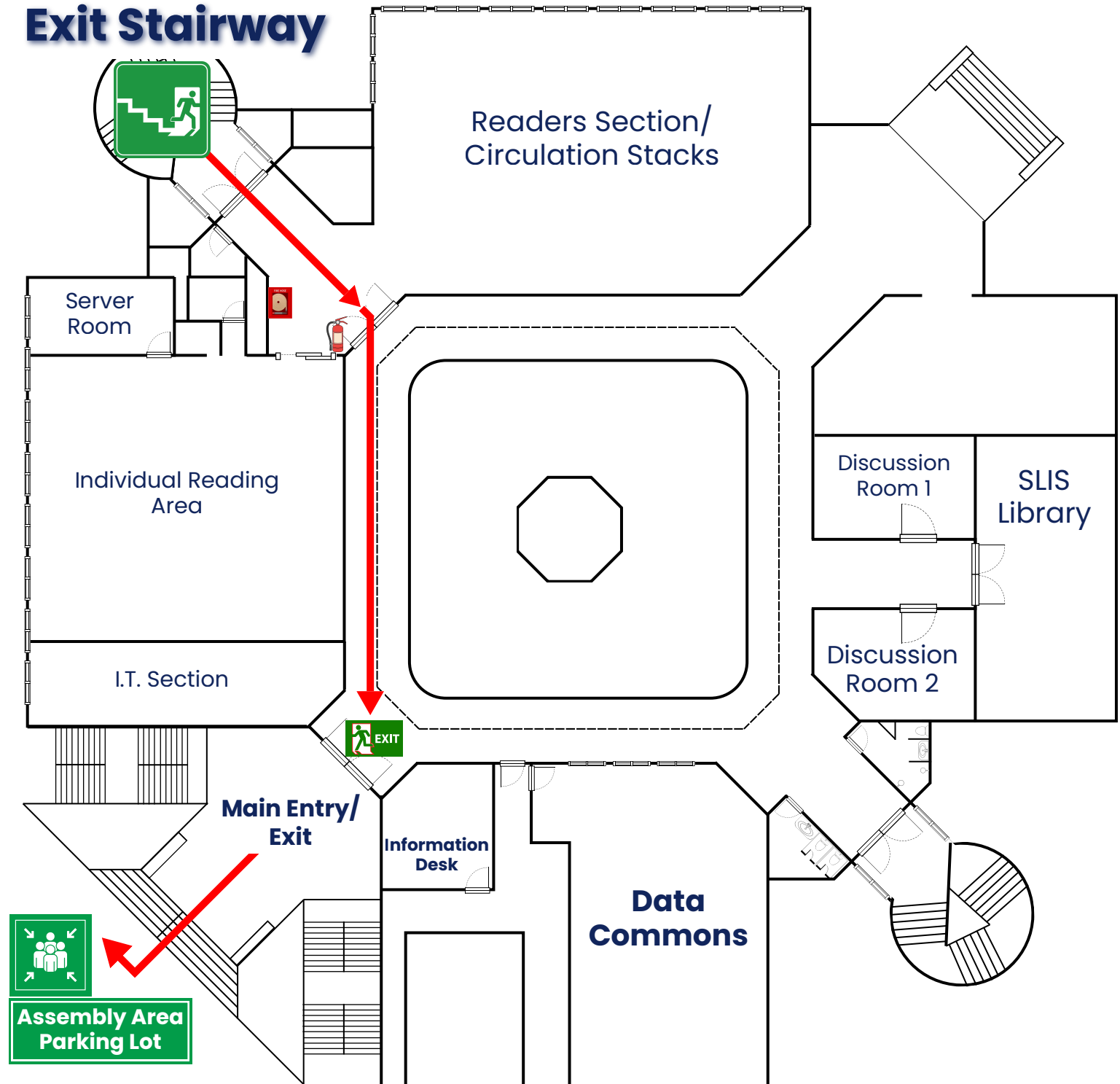
Legend

-  Primary Exit Route
-  Exit Stairway
-  Exit Location
-  Assembly Area
-
-  Emergency Fire Hose
-  Fire Extinguisher
-
-  First Aid

In case of emergency please follow the instructions below:

- 1** Remain Calm and do not panic.
- 2** Evacuate people from a safe escape route. Please follow the red line.
- 3** Do not jeopardize personal safety.
- 4** Proceed to the designated assembly area.
- 5** Do not enter the building again without permission from the management








Exit Stairway



Evacuation Map

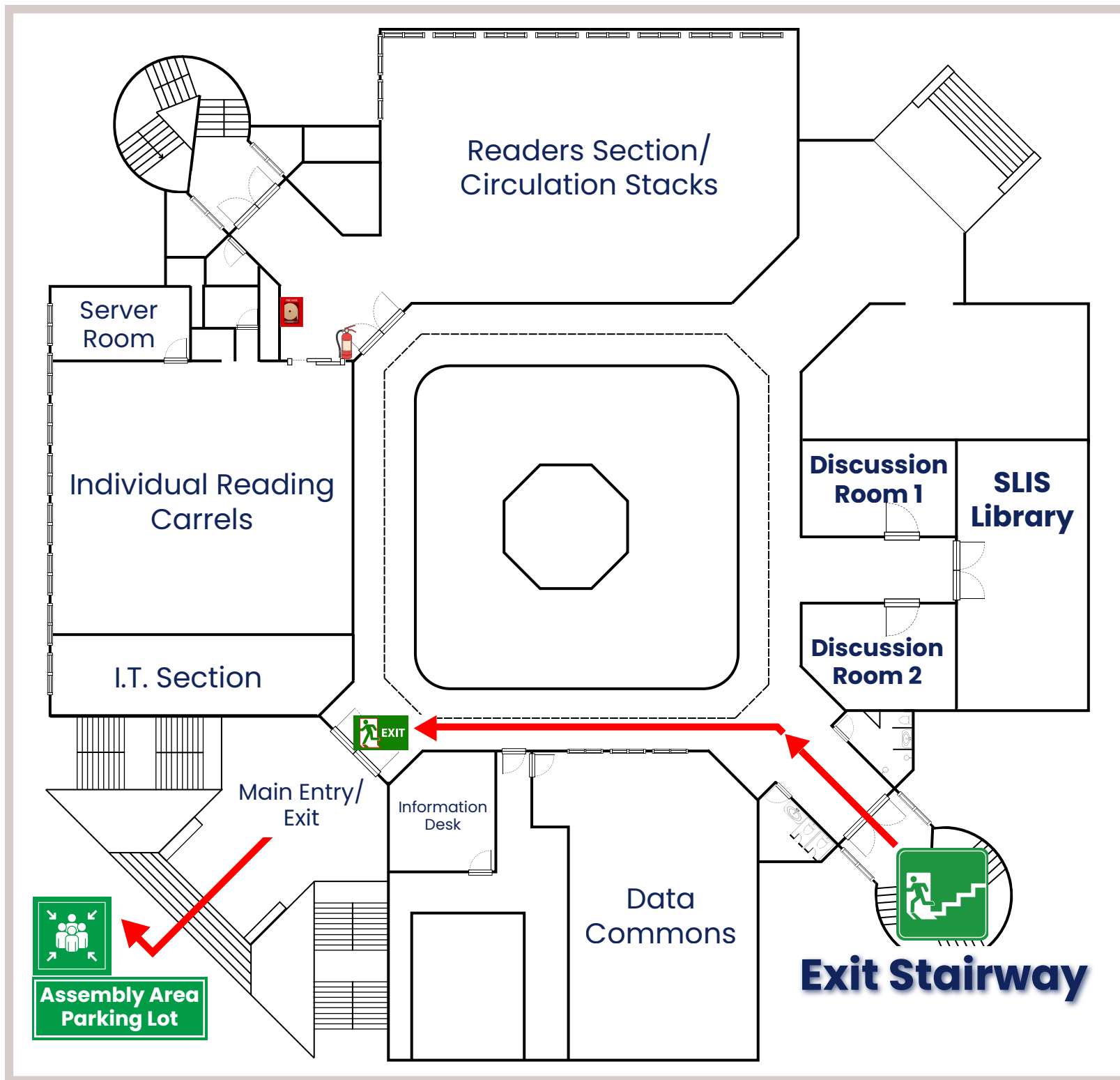
CS Library - Upper Ground
Exit Stairway from Lower Ground

Legend

-  Primary Exit Route
-  Exit Stairway
-  Exit Location
-  Assembly Area
-
-  Emergency Fire Hose
-  Fire Extinguisher
-
-  First Aid

In case of emergency please follow the instructions below:

- 1** Remain Calm and do not panic.
- 2** Evacuate people from a safe escape route. Please follow the red line.
- 3** Do not jeopardize personal safety.
- 4** Proceed to the designated assembly area.
- 5** Do not enter the building again without permission from the management



Evacuation Map








CS Library -Second Floor

- Admin Section
- Reference Section
- Technical Section
- Group Reading Area
- Staff Room

Evacuation Map

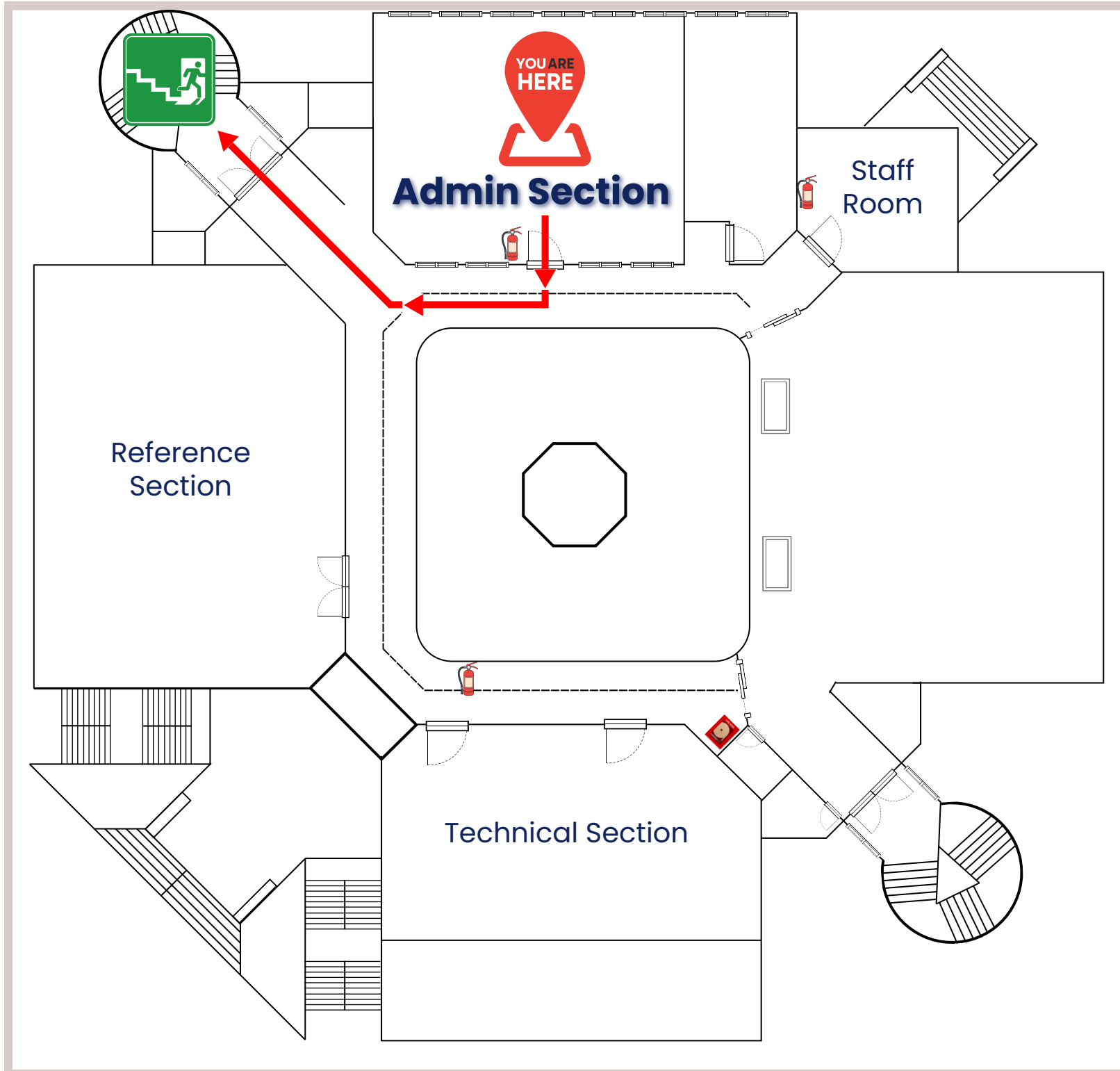
CS Library - Second Floor
Admin Section

Legend

-  Primary Exit Route
-  Exit Stairway
-  Exit Location
-  Assembly Area
-
-  Emergency Fire Hose
-  Fire Extinguisher
-
-  First Aid

In case of emergency please follow the instructions below:








- 1** Remain Calm and do not panic.
- 2** Evacuate people from a safe escape route. Please follow the red line.
- 3** Do not jeopardize personal safety.
- 4** Proceed to the designated assembly area.
- 5** Do not enter the building again without permission from the management



Evacuation Map

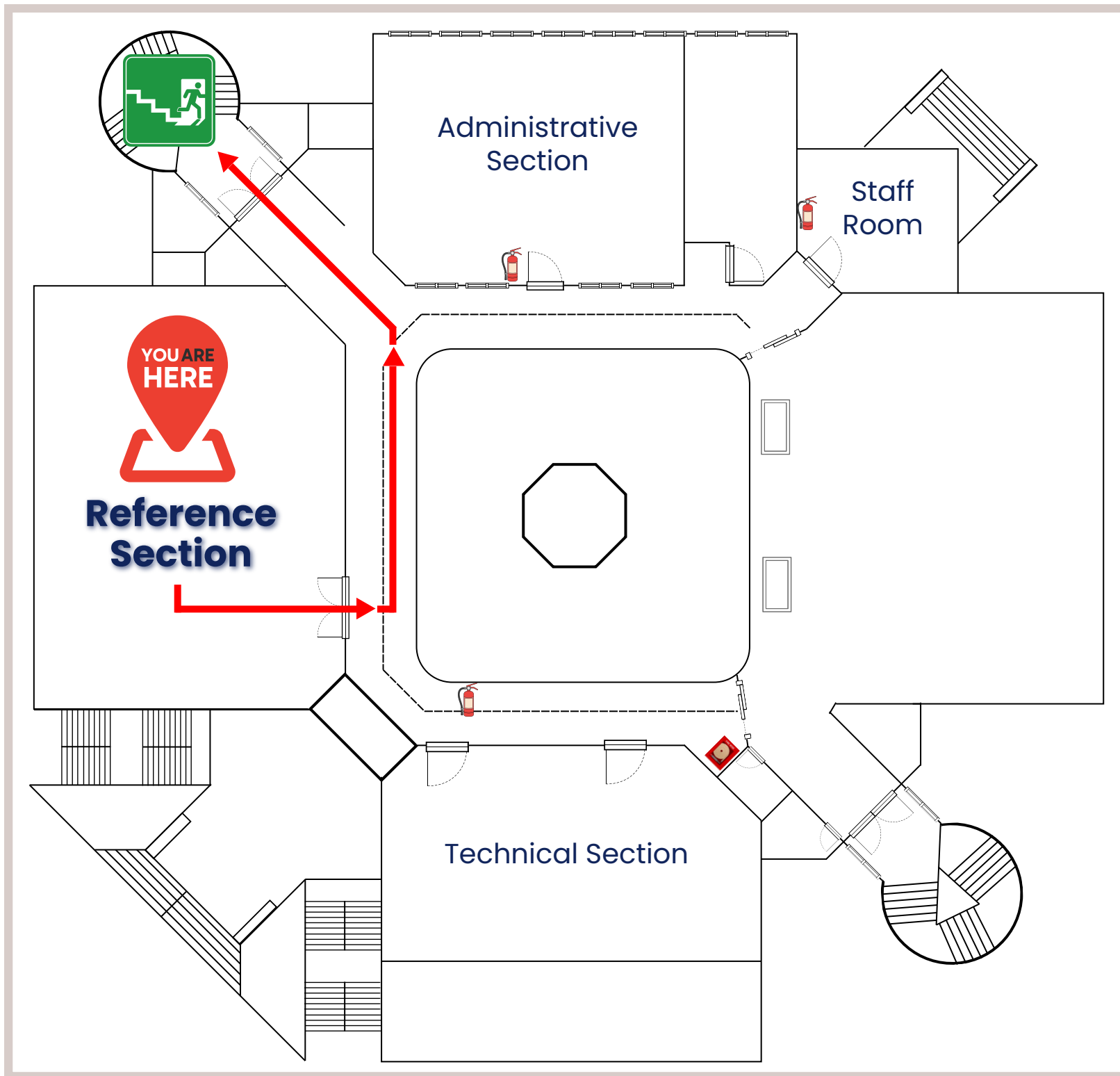
CS Library - Second Floor
Reference Section

Legend

-  Primary Exit Route
-  Exit Stairway
-  Exit Location
-  Assembly Area
-
-  Emergency Fire Hose
-  Fire Extinguisher
-
-  First Aid

In case of emergency please follow the instructions below:








- 1** Remain Calm and do not panic.
- 2** Evacuate people from a safe escape route. Please follow the red line.
- 3** Do not jeopardize personal safety.
- 4** Proceed to the designated assembly area.
- 5** Do not enter the building again without permission from the management



Evacuation Map

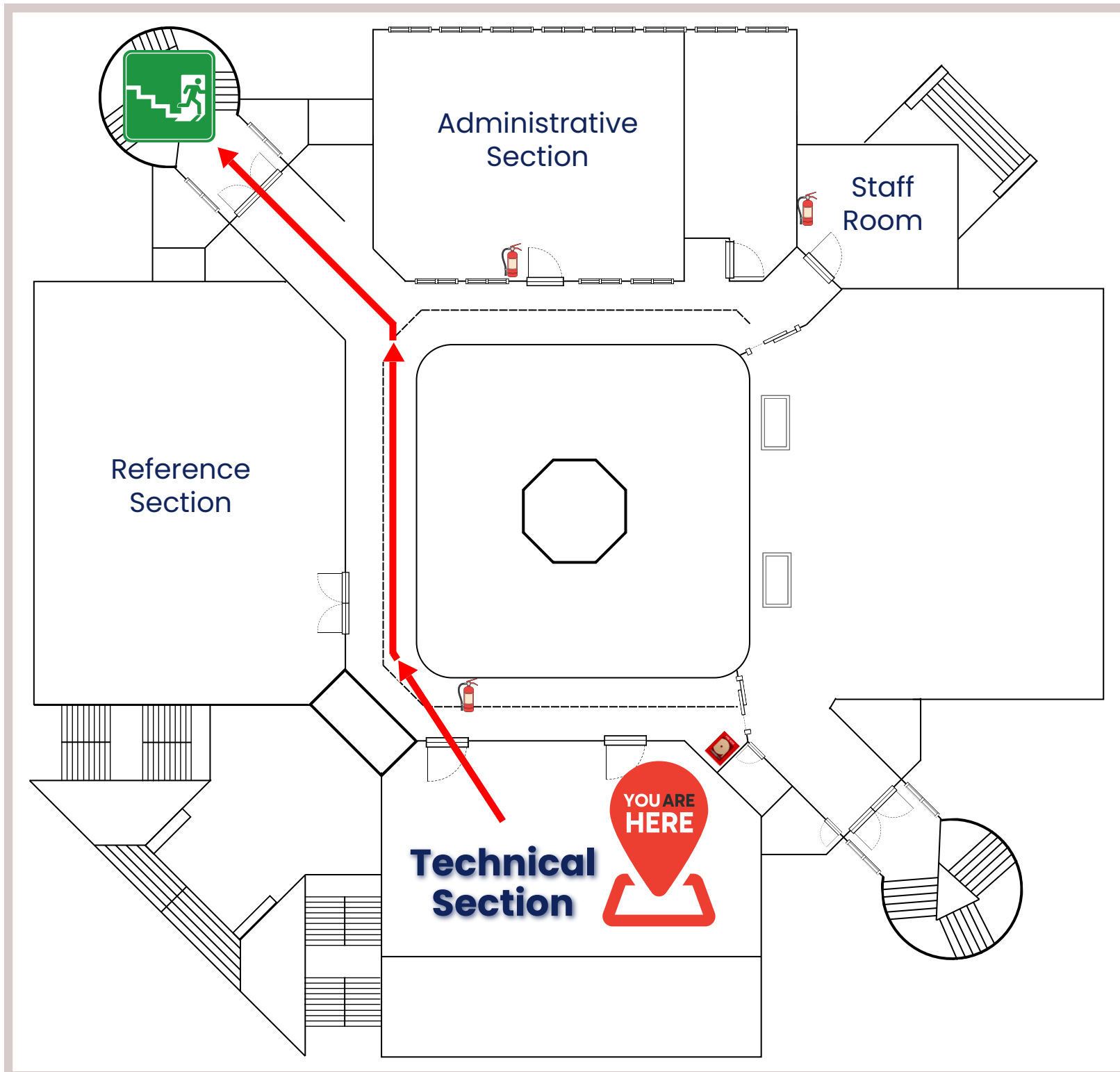
CS Library - Second Floor
Technical Section

Legend

-  Primary Exit Route
-  Exit Stairway
-  Exit Location
-  Assembly Area
-
-  Emergency Fire Hose
-  Fire Extinguisher
-
-  First Aid

In case of emergency please follow the instructions below:








- 1** Remain Calm and do not panic.
- 2** Evacuate people from a safe escape route. Please follow the red line.
- 3** Do not jeopardize personal safety.
- 4** Proceed to the designated assembly area.
- 5** Do not enter the building again without permission from the management



Evacuation Map

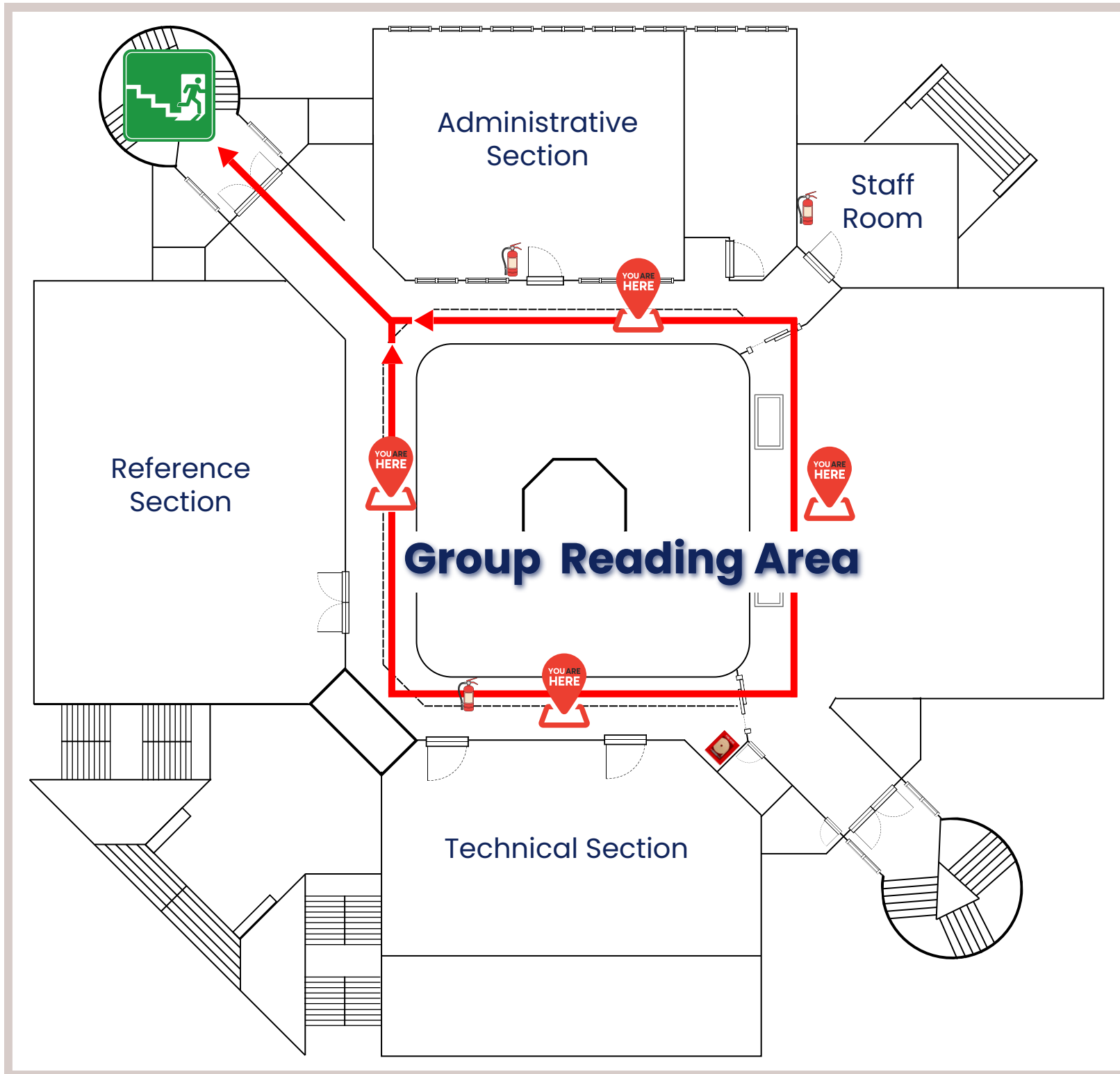
CS Library - Second Floor
Group Study Area

Legend

-  Primary Exit Route
-  Exit Stairway
-  Exit Location
-  Assembly Area
-
-  Emergency Fire Hose
-  Fire Extinguisher
-
-  First Aid

In case of emergency please follow the instructions below:








- 1** Remain Calm and do not panic.
- 2** Evacuate people from a safe escape route. Please follow the red line.
- 3** Do not jeopardize personal safety.
- 4** Proceed to the designated assembly area.
- 5** Do not enter the building again without permission from the management



Evacuation Map

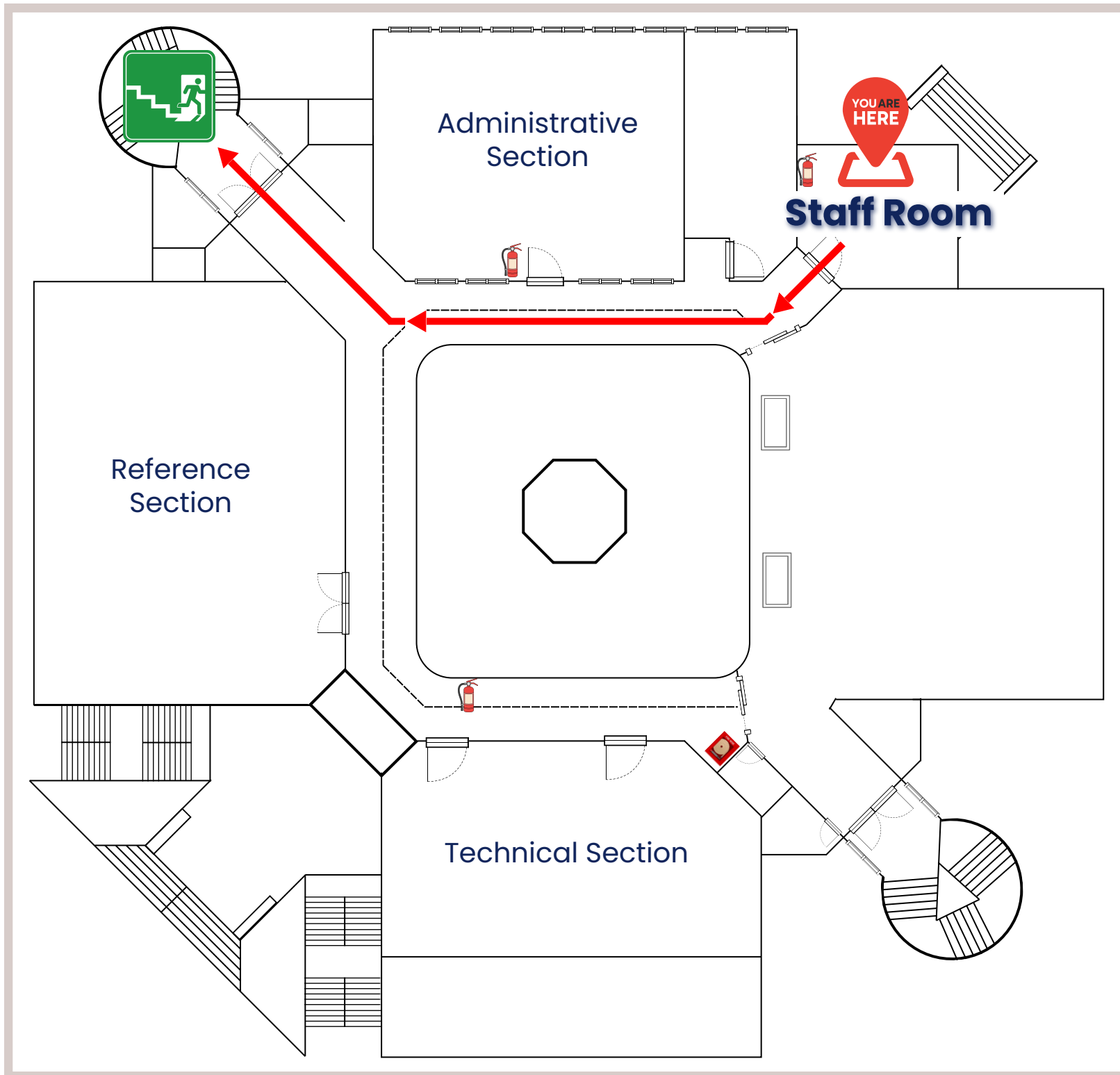
CS Library - Second Floor
Staff Room

Legend

-  Primary Exit Route
-  Exit Stairway
-  Exit Location
-  Assembly Area
-
-  Emergency Fire Hose
-  Fire Extinguisher
-
-  First Aid

In case of emergency please follow the instructions below:

- 1** Remain Calm and do not panic.
- 2** Evacuate people from a safe escape route. Please follow the red line.
- 3** Do not jeopardize personal safety.
- 4** Proceed to the designated assembly area.
- 5** Do not enter the building again without permission from the management



Evacuation Map








CS Library - Lower Ground

- Study Nook

Evacuation Map

CS Library - Lower Ground
CSLIB Study Nook

Legend

-  Primary Exit Route
-  Exit Stairway
-  Exit Location
-  Assembly Area
-
-  Emergency Fire Hose
-  Fire Extinguisher
-
-  First Aid

In case of emergency please follow the instructions below:

- 1** Remain Calm and do not panic.
- 2** Evacuate people from a safe escape route. Please follow the red line.
- 3** Do not jeopardize personal safety.
- 4** Proceed to the designated assembly area.
- 5** Do not enter the building again without permission from the management

